



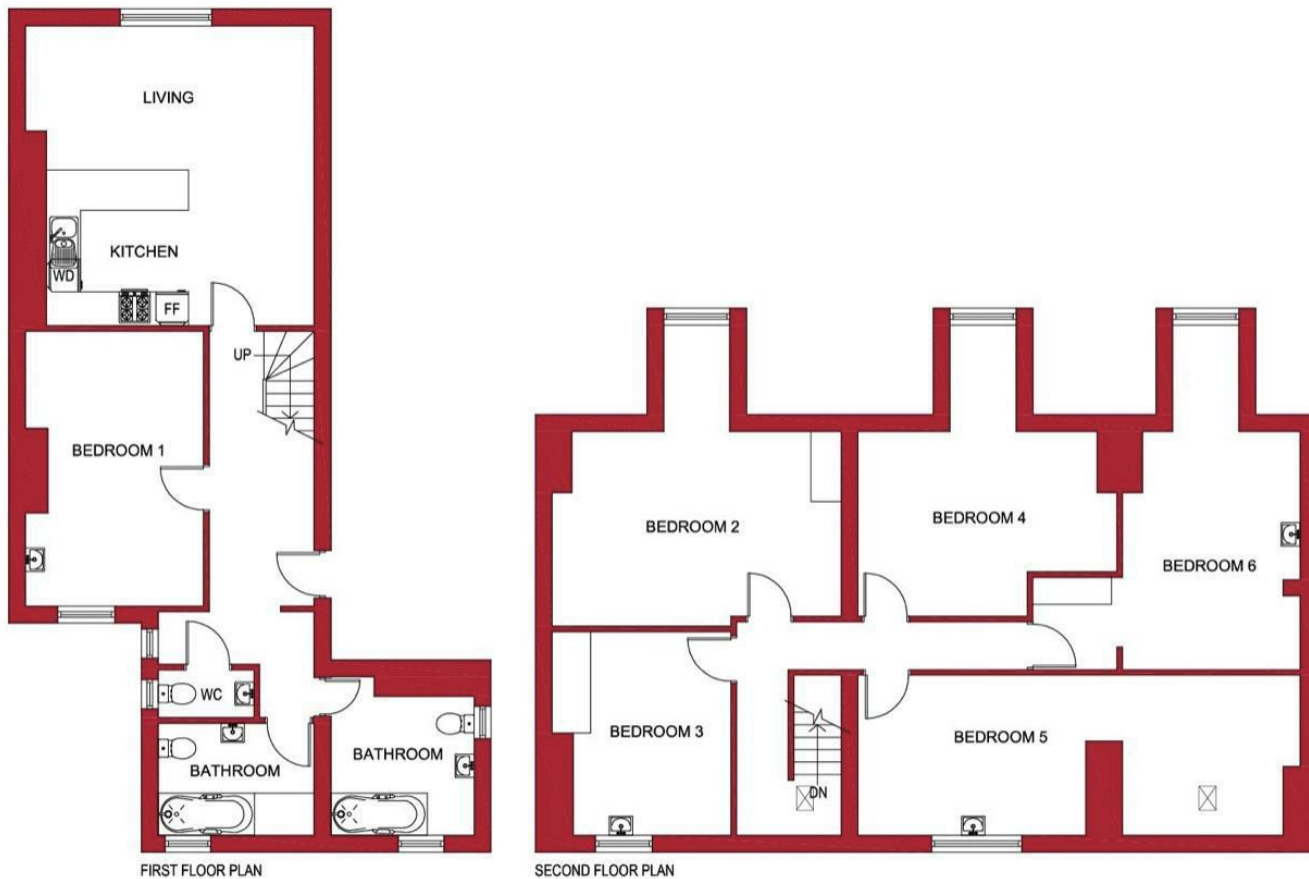
Viewings

Viewings by arrangement only.
Call 0114 2666300 to make an appointment.

Vendors Comments

Add text here

Energy Efficiency Rating		Current	Potential
Very energy efficient - lower running costs			
(92 plus) A			
(81-91) B			
(69-80) C			
(55-68) D		63	71
(39-54) E			
(21-38) F			
(1-20) G			
Not energy efficient - higher running costs			
England & Wales		EU Directive 2002/91/EC	



JC SALES & LETTINGS

Tel: 0114 483 0038
E-mail: sales@jc-salesandlettings.com
Website: www.jc-salesandlettings.com



Room 3, 288a Ecclesall Road, Sheffield, S11 8PE

£503 Per month

- AVAILABLE FOR IMMEDIATE OCCUPATION
- Bills include gas, electricity, fibre internet, TV licence, water bill and council tax
- Available for single occupants only
- Well situated for Sheffield City Centre
- Early viewing highly recommended to avoid disappointment
- £104 per week which includes all bills
- Situated on Ecclesall Road
- Excellent location, close to an abundance of local amenities
- Modern facilities throughout
- EPC Grade D

Room 3, 288a Ecclesall Road, Sheffield S11 8PE

*** PROFESSIONAL SHARER ACCOMMODATION *** £104 PER WEEK INCLUDING ALL BILLS AND COUNCIL TAX ***
AVAILABLE FOR IMMEDIATE OCCUPATION ***

A VERY WELL LOCATED, six bedroom TOP FLOOR APARTMENT with ACCOMMODATION OVER TWO FLOORS. Ideal for PROFESSIONALS and close to an abundance of local amenities. Situated in the HIGHLY SOUGHT AFTER location of ECCLESALL ROAD.

In brief the accommodation comprises: open plan lounge / kitchen, large double bedroom. two bathrooms and an addition separate WC to the first floor. There are five large double bedrooms to the second floor. An early viewing is highly recommended to avoid disappointment! EPC Grade D.



Council Tax Band: B

